

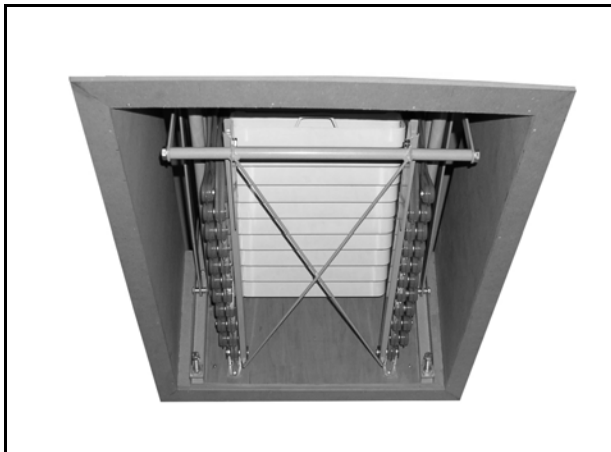


# INSTALLATION GUIDE

*Lofty*

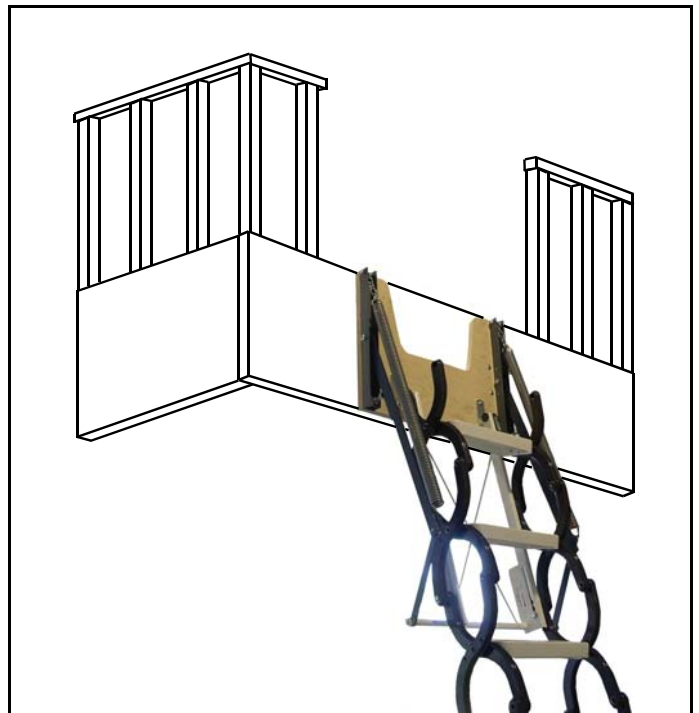
Read instructions carefully and completely before beginning installation.

Lofty may be installed in two different ways - in a ceiling opening to access attic space OR as a face-mounted stair for accessing a loft space. If used as a loft access stair, it is the homeowner's responsibility to check whether its use satisfies local building codes.



**Ceiling Mounted**

**Refer to Section A  
Page 3**



**Loft Mounted**

**Refer to Section B  
Page 6**











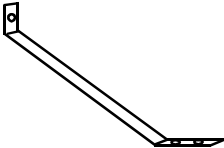


**WARNING**

- *This stairway is for residential use only.*
- *Maximum capacity is 350 lbs.*
- *Two helpers may be needed to lift the stair in order to anchor it in place.*
- *Installer should be experienced in the construction or modification of structural framing supports. Improper installation can result in stair collapse and bodily injury.*

**TOOLS AND MATERIALS REQUIRED**

Drill, tape measure, crescent wrench, ladder, lumber with same dimensions as joists, keyhole saw or utility knife to cut ceiling material.

**PARTS INCLUDED**

- |                           |  |
|---------------------------|--|
| (4) 3" Lag Screw          |    |
| (4) 1 1/2" Lag Screws     |     |
| (2) 1 1/4" Carriage Bolts |     |
| (4) Large Anchors         |     |
| (4) Small Anchors         |     |
| (2) Nuts                  |     |
| (6) Washers - Small       |     |
| (4) Washers - Large       |     |
| (2) Angle Support Bar     |    |
| (1) Door Hook             |   |
| (1) Wood Dowel            |  |

**BEFORE INSTALLATION**

- Confirm that this attic stair and its installation meet all applicable building codes.
- Inspect stair unit for any damage.
- Check that all parts from are included in carton.

**NOTE:**

**Depending on installation type, you may not need all parts shown.**

**To install for attic access, refer to Section A, Page 3.**

**To install for loft access refer to Section B, Page 6.**

# SECTION A - For Attic Access



WARNING

- Before cutting any joists, watch out for electrical wiring.
- If your attic is constructed using trusses, **DO NOT CUT CEILING JOISTS WITHOUT CONSULTING AN ENGINEER AND OBTAINING APPROVAL.**
- Because of the weight of the Rainbow Attic Stair it is highly recommended that **DOUBLE HEADERS** and **JOIST BRACES** be used for greater strength and safety.

## 1 LOCATING STAIR

1. Measure ceiling height (finished floor to finished ceiling) and verify that your unit conforms to your ceiling height in TABLE A.
2. Determine whether the chosen location allows sufficient "landing space" for your unit. Lofty pulls straight down and so has no projection. See TABLE A below.

MODEL #	COLOR	ROUGH OPENING SIZE	FRAME DIMENSIONS	TREAD WIDTH	FLOOR TO CEILING HEIGHT RANGE	NUMBER OF STEPS	PROJECTION	LANDING SPACE
L2333-92	Gray	23 1/2" X 33 1/2"	N/A	14"	6' - 10" to 7' - 8"	9	7"	40"
L2333-102	Gray	23 1/2" X 33 1/2"	N/A	14"	7' - 8" to 8' - 6"	10	9"	43"
L2333-112	Gray	23 1/2" X 33 1/2"	N/A	14"	8' - 6" to 9' - 4"	11	12"	45"
L2333-122	Gray	23 1/2" X 33 1/2"	N/A	14"	9' - 4" to 10' - 2"	12	15"	48"

TABLE A

## 2 PREPARING THE OPENING

1. Mark out the rough opening size for your unit according to TABLE A.
2. Cut the rough opening through the ceiling material.

## 3 FRAMING THE OPENING

Most attic stairs will be installed parallel to the ceiling joists (Figure 1). In cases where they are installed perpendicular to joists (Figure 2), some joists will need to be cut and tied-in to other joists with 2" x 6" or 2" x 8" "headers". These headers will form the box frame into which the stair will be secured.

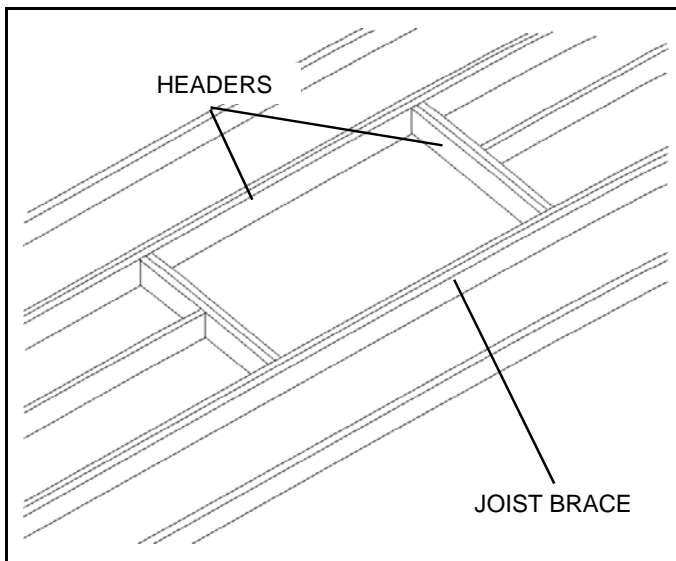


Figure 1

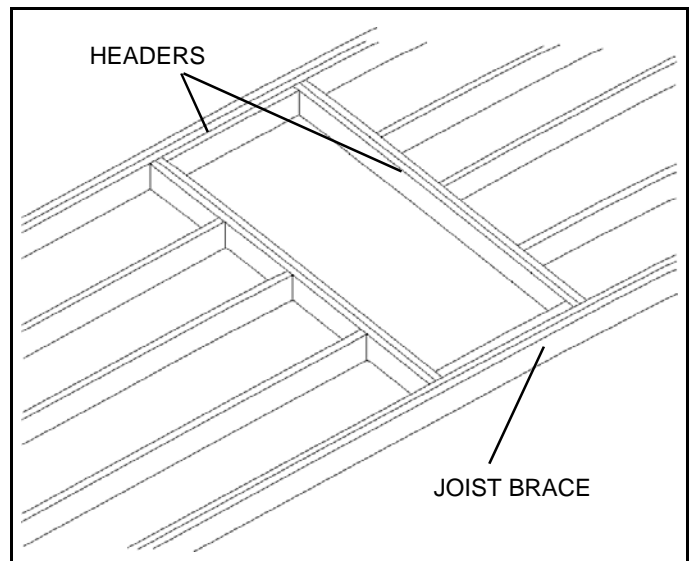


Figure 2

# SECTION A - For Attic Access

## INSTALLING THE STAIR

1. Measure height of beam that stair will be anchored to. Figure 3. Allow space for thickness of door if one will be installed. **Lofty does not come with an access door.**
2. Transfer measurement to backboard of Lofty and attach a 2 X 4 temporary support. Cut support longer than width of opening so it spans across side beams.
3. Screw from behind and be careful not to go clear through backboard.
4. Set stair over beam as in diagram. Extend stair to expose front of backboard and lag screw to beam using four 3" screws supplied. **Do not stand on stair yet.** If beam is much shorter than backboard, then additional support can be achieved by using the two angle support bars supplied. Use two carriage bolts with washers and nuts at top and four 1 1/2" lag screws at bottom. Plastic anchors are only used if installing stair into concrete slab floor. Figure 4.

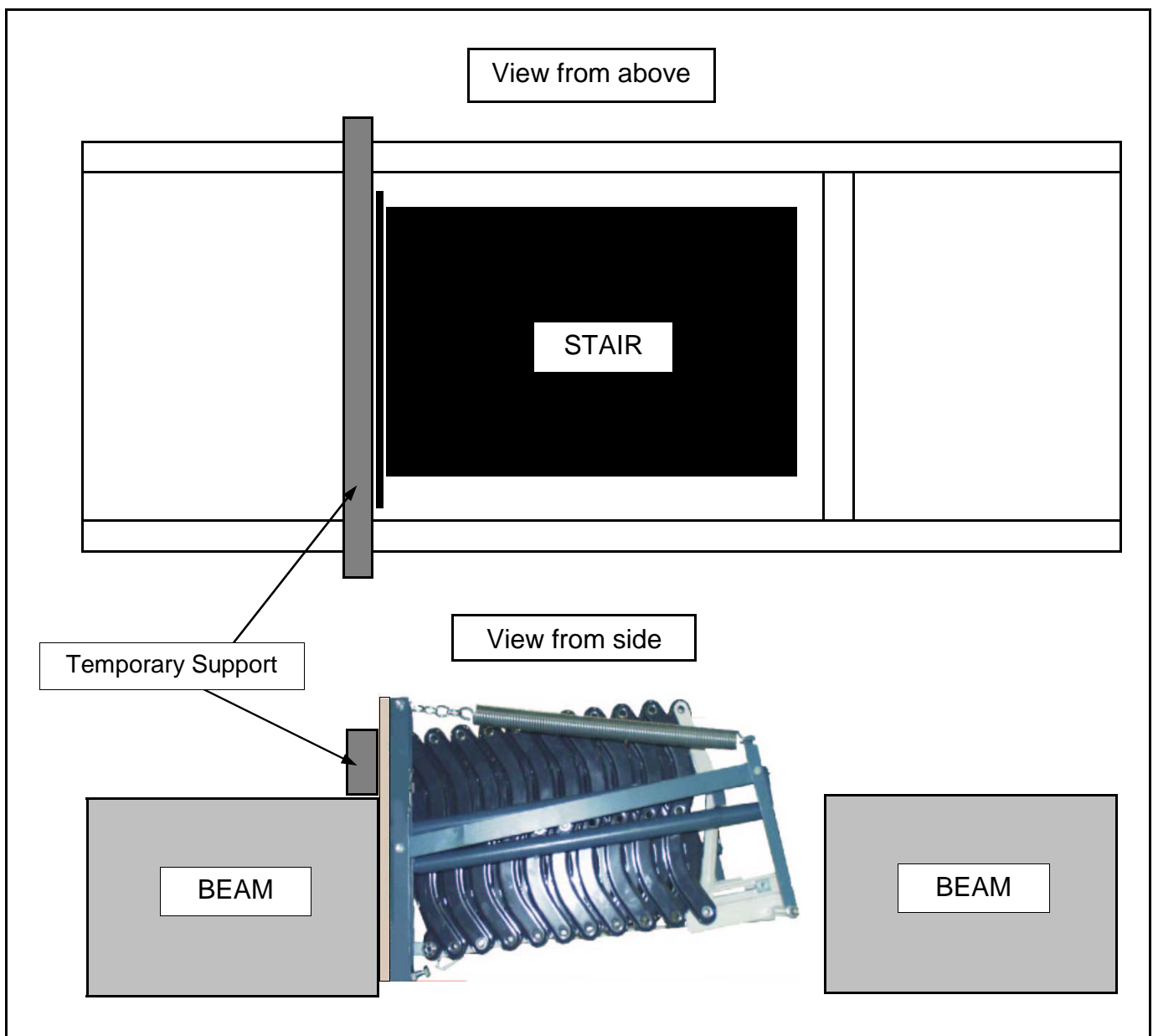


Figure 3

# SECTION A - For Attic Access

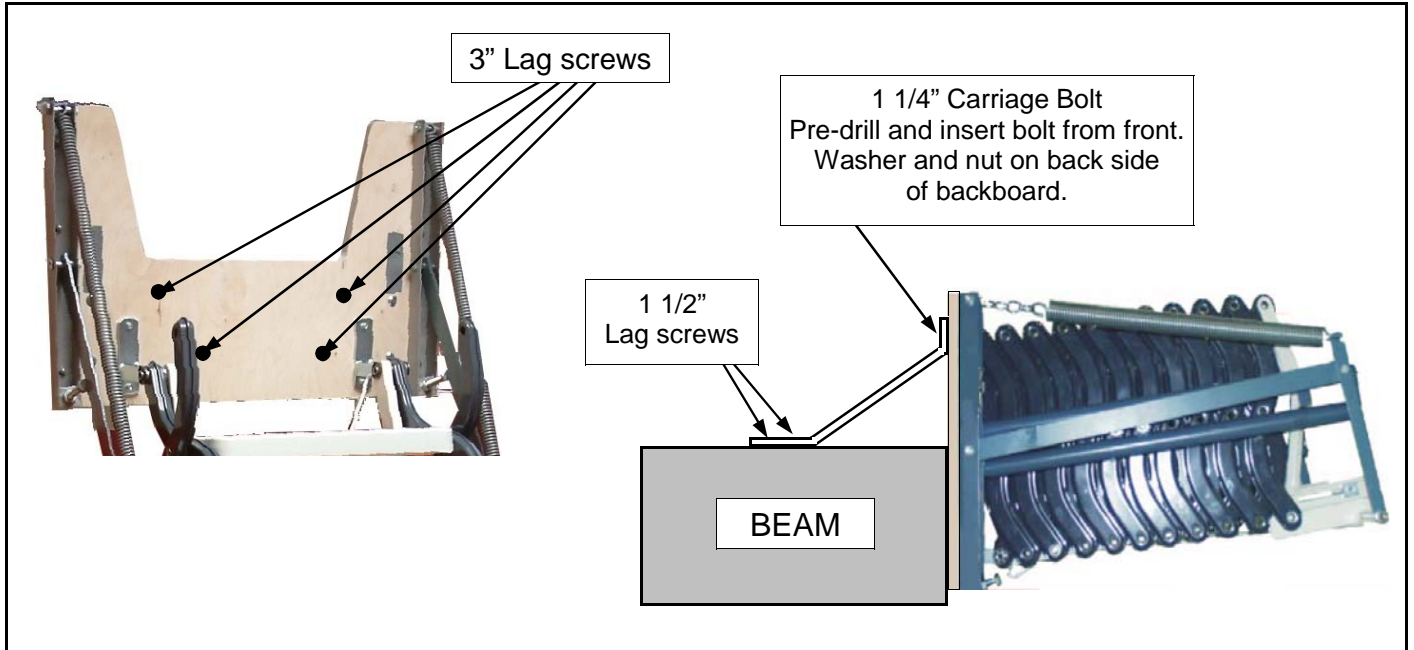


Figure 4

## 5 HEIGHT ADJUSTMENT

1. With stair extended to floor, adjust set screw under stabilizer arm so it touches bottom of arm. This provides support to keep stair straight. Figure 5.
2. Slide bolt head up until it stops and tighten. This adjustment maintains stair height. Be sure to do both sides. Figure 6.

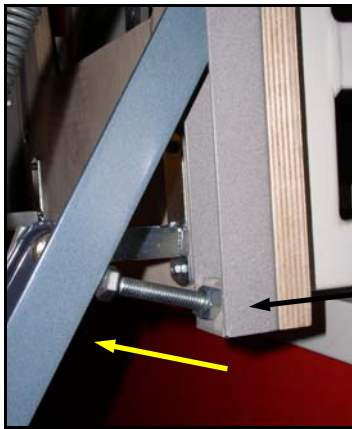


Figure 5



Figure 6

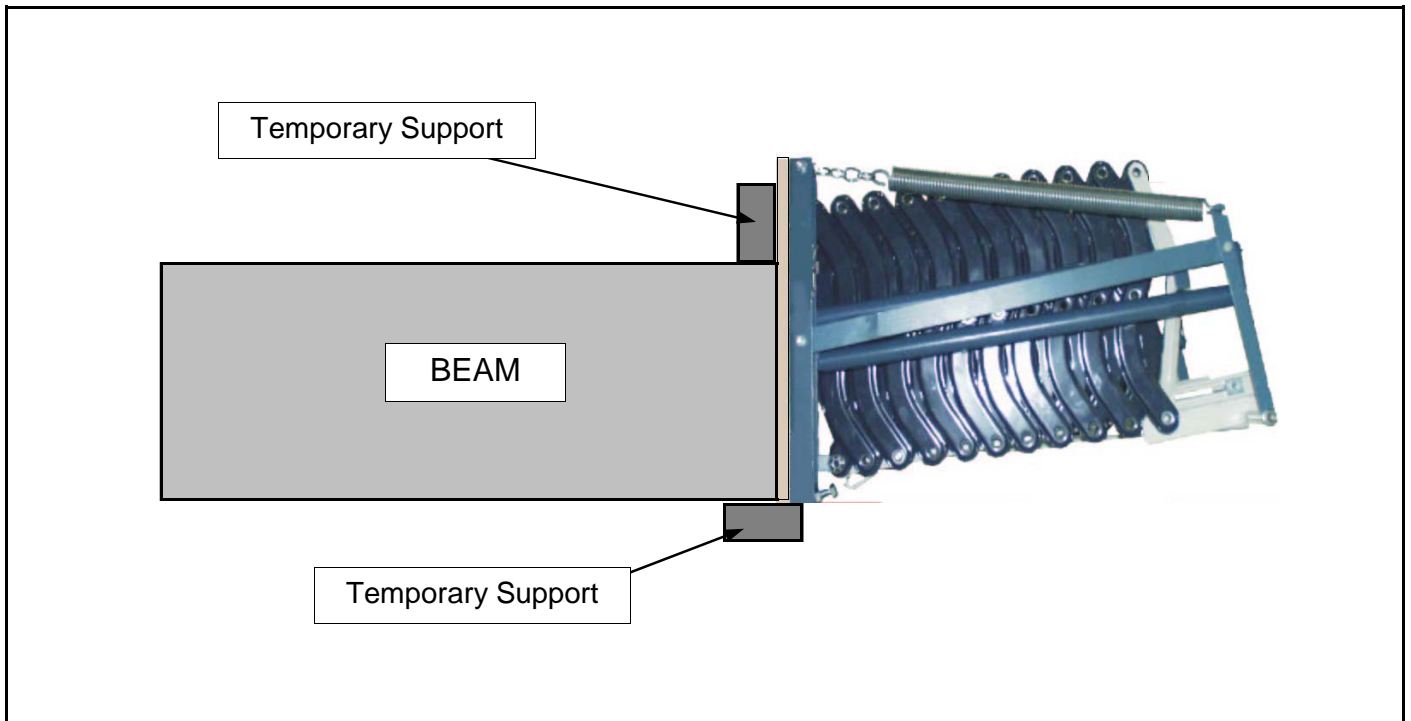


# SECTION A - For Loft Access

The process for installing the stair for loft access is the same as the ceiling access beginning with Step # 4 on page 4, except that

***depending on your particular installation and number of helpers, you may want to anchor the temporary support to the floor above and attach a secondary support on the underside of the unit to keep it from slipping off. See diagram below.***

In addition, the bottom edge of the back board should be kept even with the bottom edge of the beam to which it is screwed. Use of the angle support bars is not recommended since they may pose a tripping hazard.



## ***Congratulations!***

***You are now ready to begin using your Rainbow Attic Stair. As with any product, be sure to follow instructions for safe, efficient and trouble-free operation for years to come.***

***\*\*\* Children should never be allowed to operate or climb any attic stair. \*\*\****

### **LIMITED WARRANTY**

*SP Partners, LLC warrants that the unit will be free from any defects in material and workmanship for two years from purchase date provided that the stair is installed in compliance with the preceding instructions and operated and maintained in accordance with these instructions and applicable warnings.*

*This warranty specifically excludes any and all non-defect damage, any and all damage, injuries and losses arising from improper installation of this product, unreasonable use to include exceeding the specified weight limitations, and any and all labor charges incurred for removing or reinstalling a repaired stair unit or any of its components.*

*During the warranty period stated, should the stair unit or any of its components exhibit a manufacturing defect please first call SP Partners, LLC at 877-369-6996 before dismantling the product in order to determine the extent of the defect and what course of action needs to be taken to correct the problem. A proof of purchase will be required in all cases.*

### **ADDITIONAL EXCLUSIONS**

*SP Partners, LLC's above-stated express limited warranty is being made in lieu of all implied warranties of any kind, including those as provided by the Uniform Commercial Code for merchantability of the product and for fitness of the product for a particular purpose. All such implied warranties, including those of merchantability and/or fitness for a particular purpose, are excluded and disclaimed. Furthermore, all claims for consequential damages and for incidental damages that may arise from a breach of the above-mentioned express warranty are also excluded. In no event shall SP Partners, LLC be liable for any breach of warranty and/or for any negligence and/or for any strict liability which would exceed in damage amount the cost of the stair unit.*

*No representative or person is authorized to assume for SP Partners, LLC, any responsibility which would be either an alternative to or in addition to the express product warranty as stated above. This warranty gives you certain specific legal rights as were set forth above and any other rights that may vary from state to state. If any portion of this express warranty is deemed to be unenforceable at any time hereafter, any such provision shall be severed from this agreement, but all other terms, conditions and provisions shall remain in full force and effect.*

***SP Partners, LLC***

Tel: 877-369-6996

Website: [www.RainbowAtticStair.com](http://www.RainbowAtticStair.com)

Email: [info@RainbowAtticStair.com](mailto:info@RainbowAtticStair.com)