

# Industrial Ladder

Classic Service

& Supply Company, Incorporated

Established in 1975



## Ladders - Scaffolding - Truck Equipment

<b>Chicago</b> 245 E. Adele Villa Park, IL 60181 P: 630-530-7580 F: 630-530-5585	<b>Milwaukee</b> 10939 W. Mitchell West Allis, WI 53214 P: 414-258-9476 F: 414-258-9487	<b>Minneapolis</b> 8437 University N.E. Spring Lake Park, MN 55432 P: 763-784-4111 F: 764-784-4114	<b>Cincinnati</b> 4725 Port Union Hamilton, OH 45011 P: 513-860-9720 F: 513-860-9721	<b>Baltimore</b> 10611-C Iron Bridge Jessup, MD 20794 P: 301-490-0281 F: 301-490-0282	<b>Dallas</b> 3320 Roy Orr Grand Prairie, TX 75050 P: 972-399-8885 F: 972-399-8886	<b>Indianapolis</b> 3401 N Shadeland Indianapolis, IN 46226 P: 317-359-7580 F: 317-359-1689	<b>Columbus</b> 3341 Centerpoint, Unit B Grove City, OH 43123 P: 614-539-0811 F: 614-539-0855
---	--	---	---	--	---	--	--

## Scaffold Rental Rates - 4 Week Minimum

### Frames - 5' Wide Ledger

item number	description	rate
R-FLT-3	3x5 Ledger Frame	5.00
R-FLT-4	4x5 Ledger Frame	5.00
R-FLT-5	5x5 Ledger Frame	5.00
R-FLT-64	6'4"x5 Ledger Frame	5.00
R-FWT-64	6'4"x5 Walk Thru	5.00

### Frames - 5' Wide Access

item number	description	rate
R-FLW-3	3x5 Red Frame	5.00
R-FLW-4	4x5 Red Frame	5.00
R-FLW-5	5x5 Red Frame	5.00
R-FLW-67	6'7" Red Frame	5.00
R-FWW-67	6'7" Red Walk Thru	5.00

### Frames - 30" Wide

item number	description	rate
R-RTFL-3	3x30" Ladder Frame	5.00
R-RTFL-4	4x30" Ladder Frame	5.00
R-RTFL-5	5x30" Ladder Frame	5.00

### Cross Braces

item number	description	rate
R-B72	7x2 Cross Brace	1.50
R-B73	7x3 Cross Brace	1.50
R-B74	7x4 Cross Brace	1.50
R-B102	10x2 Cross Brace	1.75
R-B103	10x3 Cross Brace	1.75
R-B104	10x4 Cross Brace	1.75
R-G75	7' Cat-A-Corner Brace	2.00
R-G10	10' Cat-A-Corner Brace	3.00
R-0013-15-07	7' Straddle Brace	3.00
R-B734A	7x3x4 Brace	1.50

### Internal Access Stairways

item number	description	rate
R-SW5	5' Stairway	17.00
R-IHR5	Inside Handrail-5'	5.50
R-OHR5	Outside Handrail-5'	5.50
R-SWSB-5	Starter Bar-5'	3.00
R-SW64	6'4" Stairway	19.00
R-IHR64	Inside Handrail-6'4"	6.50
R-OHR64	Outside Handrail-6'4"	6.50
R-SWSB-64	Starter Bar-6'4"	3.00

### Guardrail Components

item number	description	rate
R-SGEP-5	5' End Panel	8.00/ea
R-SGSP-7	7' Side Panel	8.00/ea
R-R30	30" Guard Rail	1.00
R-R5	5' Guard Rail	1.00
R-R7	7' Guard Rail	1.00
R-R10	10' Guard Rail	1.00
R-WRGRPS	Waco Guard Rail Post	2.00
R-CGRP	Corner Guard Rail Post	2.00

### Baker Scaffolding

item number	description	rate
R-1006	6' Tower w/ caster	45.00
R-2006	6' Upper Section	40.00
R-0172-1050	3'6" Frame	8.00
R-0172-2060	Platform Support	8.00
R-0172-3060	6' Board	8.00
R-0172-6706	6' Guard Rail	10.00
R-0172-0150	Outrigger	4.00
R-0026-072	5" Caster	4.00

### Tube & Clamp Scaffold

item number	description	rate
R-RAC	Right Angle Clamp	2.50
R-SC	Swivel Clamp	2.50
R-TCBP	Tube Base Plate	1.00
R-TC4	4' Tube	2.00
R-TC6	6' Tube	3.00
R-TC8	8' Tube	3.50
R-TC10	10' Tube	4.00
R-TC12	12' Tube	5.00
R-TC13	13' Tube	5.50
R-TC14	14' Tube	6.00
R-TC16	16' Tube	6.50
R-TC20	20' Tube	7.00

### External Access Ladders

item number	description	rate
R-SGEP-5	5' End Panel	8.00/ea
R-AL6	6' Access Ladder	4.50
R-AL5	5' Access Ladder	4.00
R-AL3	3' Access Ladder	4.00
R-ALB	Access Ladder Bracket	2.00
R-ALHR	A.L. Handrail	6.00
R-ALSB	A.L. Starter Bar	3.00

### Planking & Decking

item number	description	rate
R-5307-19	7'x19-7/8" Wood Deck	8.00
R-5310-19	10'x19-7/8" Wood Deck	11.00
R-5307-24	7'x24" Wood Deck	10.00
R-5310-24	10'x24" Wood Deck	13.00
R-WSP-8	8' 2x10 OSHA Plank	4.00
R-WSP-12	12' 2x10 OSHA Plank	6.00
R-WSP-16	16' 2x10 OSHA Plank	8.00

### Scaffold Accessories

item number	description	rate
R-WTS	Wall Tie System	4.50
R-SH1	Shore Head	1.00
R-FLC	Frame Leg Clamp	1.00
R-CBP	Curved Base Plate	1.00
R-RTO	Outrigger Bracket	3.00
R-CR8	8" Scaffold Caster	6.00
R-VSB20	20" Side Arm	2.50
R-VSB30	30" Side Arm	3.00
R-HA	Hoist Arm	4.00
R-HAW	Hoist Arm Wheel	6.00
R-LJB	Leveler w/ plate	2.50
R-LJS	Leveler w/ socket	2.50
R-BP1	Base Plate	.50
R-0030-127	Swivel Base Plate #7	1.50
R-TP	Toggle Pins	.15

### Toeboard Components

item number	description	rate
R-TB30	30" Toeboard	1.50
R-TB5	5' Toeboard	1.50
R-TB7	7' Toeboard	2.50
R-TB8	8' Toeboard	3.00
R-TB10	10' Toeboard	3.50
R-TBH	Wood Toeboard Holder	1.00

### Putlogs & Accessories

item number	description	rate
R-P-8	8' Putlog	8.00
R-P-12	12' Putlog	12.00
R-P-16	16' Putlog	16.00
R-P-22	22' Putlog	22.00
R-A1H-U	Angle Hanger	2.00
R-PS-1	Putlog Support	3.00

## RENTAL PERIOD

Rate shown is for rental of items for a minimum 28 day period. Rental rate is pro-rated daily after first four week period. Items on page two carry a weekly and 4 week rate.

## DELIVERY TERMS

We offer delivery and pick-up via our trucks for a charge of \$50.00 per hour each way, with a minimum charge of \$50.00. Delivery is tailgate service and 24 hour notice is required.

## SAFETY INFORMATION

Safety is everyone's concern. Please follow all local, state, and federal safety regulations when using scaffolding. Instructions are provided for all rentals. Visit [www.industrialadder.com](http://www.industrialadder.com) for safety info.

# Equipment Rental Rates

## ALUM-A-POLE SYSTEMS

item number	description	7 day rate	28 day rate
R-AAP-6	6' POLE	25.00	55.00
R-AAP-12	12' POLE	39.00	88.00
R-AAP-18	18' POLE	56.00	150.00
R-AAP-24	24' POLE	73.00	167.00
R-APPJ	PRO JACK	25.00	56.00
R-AABF	PRO BRACE	10.00	25.00
R-APPB	PRO BENCH	18.00	35.00
R-AAJ-6	6' JOINT	18.00	35.00



## VERMETTE JOBSITE LIFTS

item number	description	daily rate	weekly rate
R-520A	lifts 500 lbs. to 20 ft.	110.00	320.00
R-512A	lifts 500 lbs. to 12 ft.	95.00	275.00
R-A-1	lifts 500 bls to 10 ft.	75.00	215.00

## FIBERGLASS STEP LADDERS

item number	description	daily rate	weekly rate
R-7404	4' STEP LADDER	20.00	40.00
R-7406	6' STEP LADDER	20.00	40.00
R-7408	8' STEP LADDER	25.00	48.00
R-7410	10' STEP LADDER	43.00	89.00
R-7412	12' STEP LADDER	53.00	107.00
R-T7414	14' TWIN FRONT STEP	90.00	160.00
R-T7416	16' TWIN FRONT STEP	105.00	180.00

## ALUMINUM EXTENSION LADDERS

item number	description	daily rate	weekly rate
R-D1516-2	16' EXTENSION	30.00	61.00
R-D1520-2	20' EXTENSION	30.00	61.00
R-D1524-2	24' EXTENSION	43.00	85.00
R-D1528-2	28' EXTENSION	51.00	100.00
R-D1532-2	32' EXTENSION	60.00	118.00
R-D1536-2	36' EXTENSION	70.00	138.00
R-D1540-2	40' EXTENSION	80.00	156.00
R-D544-2	44' EXTENSION	125.00	225.00
R-D548-2	48' EXTENSION	135.00	250.00
R-560-3	60' EXTENSION	150.00	275.00



## ALUMINUM LADDER JACKS

item number	description	7 day rate	28 day rate
R-JACKSFL	stinson short body	20.00/pair	65.00/pair



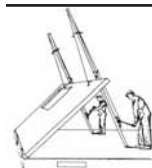
## ALUMINUM EXTENSION PLANKS - 14" WIDE

item number	description	7 day rate	28 day rate
R-PA206	extends from 6' to 9'	50.00	125.00
R-PA208	extends from 8' to 13'	60.00	145.00
R-PA210	extends from 10' to 17'	70.00	165.00



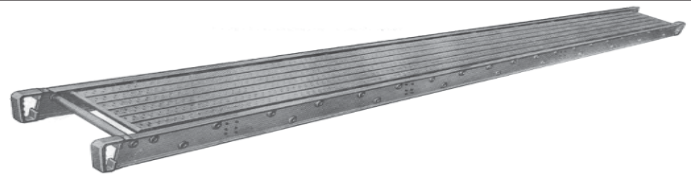
## TRASH HOPPERS

item number	description	7 day rate	28 day rate
R-1305	1/2 cu. yd. w/handle 750 lb. capacity	60.00	175.00



## PROCTOR WALL JACKS

item number	description	daily rate	weekly rate
R-PWJ-16	for 7' to 10'6" walls 1000 lb. capacity	150.00/pr.	400.00/pr.



## ALUMINUM STAGES

item number	length	depth	weight	7 days	28 days
<b>12" Wide Decorator Plank - One Man (250 LB) Capacity</b>					
R-2012	12 FT.	4"	36 lbs	50.00	125.00
R-2016	16 FT.	4"	48 lbs	50.00	125.00
R-2020	20 FT.	5"	66 lbs	75.00	175.00
R-2024	24 FT.	5"	78 lbs	75.00	175.00

### 12" Wide Scaffold Plank - Two Man (500 LB) Capacity

R-2316	16 FT.	4"	48 lbs	50.00	125.00
R-2320	20 FT.	6"	79 lbs	75.00	175.00
R-2324	24 FT.	6"	112 lbs	75.00	175.00
R-2328	28 FT.	6"	131 lbs	100.00	275.00
R-2332	32 FT.	6"	149 lbs	160.00	375.00

### 14" Wide Scaffold Plank - Two Man (500 LB) Capacity

R-2412	12 FT.	4"	40 lbs	65.00	170.00
R-2416	16 FT.	5"	58 lbs	65.00	170.00
R-2420	20 FT.	6"	85 lbs	75.00	175.00
R-2424	24 FT.	6"	109 lbs	75.00	175.00
R-2428	28 FT.	6"	127 lbs	100.00	275.00

### 20" Wide Decorator Plank - One Man (250 LB) Capacity

R-2120	20 FT.	5"	87 lbs	100.00	275.00
R-2124	24 FT.	5"	104 lbs	125.00	300.00

### 20" Wide Stage Platform - Two Man (500 LB) Capacity

R-2512	12 FT.	4"	48 lbs	65.00	170.00
R-2516	16 FT.	5"	70 lbs	65.00	170.00
R-2520	20 FT.	6"	100 lbs	100.00	275.00
R-2524	24 FT.	6"	120 lbs	140.00	320.00
R-2528	28 FT.	6"	156 lbs	140.00	320.00
R-2532	32 FT.	6"	177 lbs	200.00	500.00
R-2536	36 FT.	6"	245 lbs	250.00	600.00

### 24" Wide Stage Platform - Two Man (500 LB) Capacity

R-2612	12 FT.	4"	56 lbs	65.00	170.00
R-2616	16 FT.	5"	81 lbs	65.00	170.00
R-2620	20 FT.	6"	114 lbs	120.00	300.00
R-2624	24 FT.	6"	148 lbs	150.00	350.00
R-2628	28 FT.	6"	178 lbs	160.00	375.00

## SINGLE-SIDED STAGE HANDRAIL SYSTEMS

item number	description	7 day rate	28 day rate
R-HR16	for 16' stages	30.00	90.00
R-HR20/24	for 20' thru 24' stages	50.00	150.00
R-HR28/32/36	for 28' thru 36' stages	70.00	210.00



## SIDING TOOLS

item number	description	7 dayrate	28 day rate
R-BRAKE	10'6" Brake	150.00	400.00
R-TAT-50	Cutting Table	125.00	350.00

